



XTREME
LIGHTING

XL Smart Lighting System

We're Your Lighting Partner

2018 XTREME Lighting Limited - all rights reserved

XTREME Lighting reserves the right to alter material, dimensions, weight and characteristics without prior notice. All the surface, color and specification of the products which are mentioned in the catalogue, please refer to physical product by XTREME Lighting.

For latest information and specification, please contact XTREME Lighting at inquiry@xlighting.com.hk or +852-3565 5045.

This catalogue replaces all previous catalogues.



Contact us

E/ inquiry@xlighting.com.hk

T/ +852-3565 5045

F/ +852-3747 2584



Unit H, 7/F, Gold King Industrial Building,
35-41 Tai Lin Pai Road, Kwai Chung

XTREME Lighting is a Hong Kong based company who provide high performance and reliable lighting solutions and products.

Our vision is to give "Green and Energy Save Lighting" to our clients and our planet.

Now, we are providing wide range of lighting solutions and products which include

- **XL Smart lighting solution**
- **Commercial, Retail and Advertising lighting**
- **LED wall display**
- **LED facade lighting**

Also, we have a strong and well organized professional team to provide high quality one-stop solutions to meet our clients' needs.

XTREME Lighting has gained lots of good reputation and is recognized from our clients who are from different sectors, such as property, commercial, retails and hotel establishments.



May be....

This box can be found
at the entrance of
your office

As user, you find that it is not convenient because you have to walk around the office in order to switch on or off it, especially to the last leaver

As owner, you find that it cost a lot in lighting for any modification, especially in large area plus EMSD regulatory

As designer, you find that there are hard to communicate well with installer, especially in many scenes or zone making

As contractor, you find that it is very time consuming to install many wires, especially in a very narrow trunk with complex design

XL Smart is Solution



XL Smart

is a new lighting management solution from XTREME Lighting Ltd with 3 major functions

- **Lighting programming**
- **Smart control on demand (wireless and automate)**
- **Real time reporting**

Under Zigbee technology, our lighting system not only support with wireless switch, but also provide a comprehensive web portal to let user control and monitor in tablet. Thus, customer can check and control each zone's lighting status.

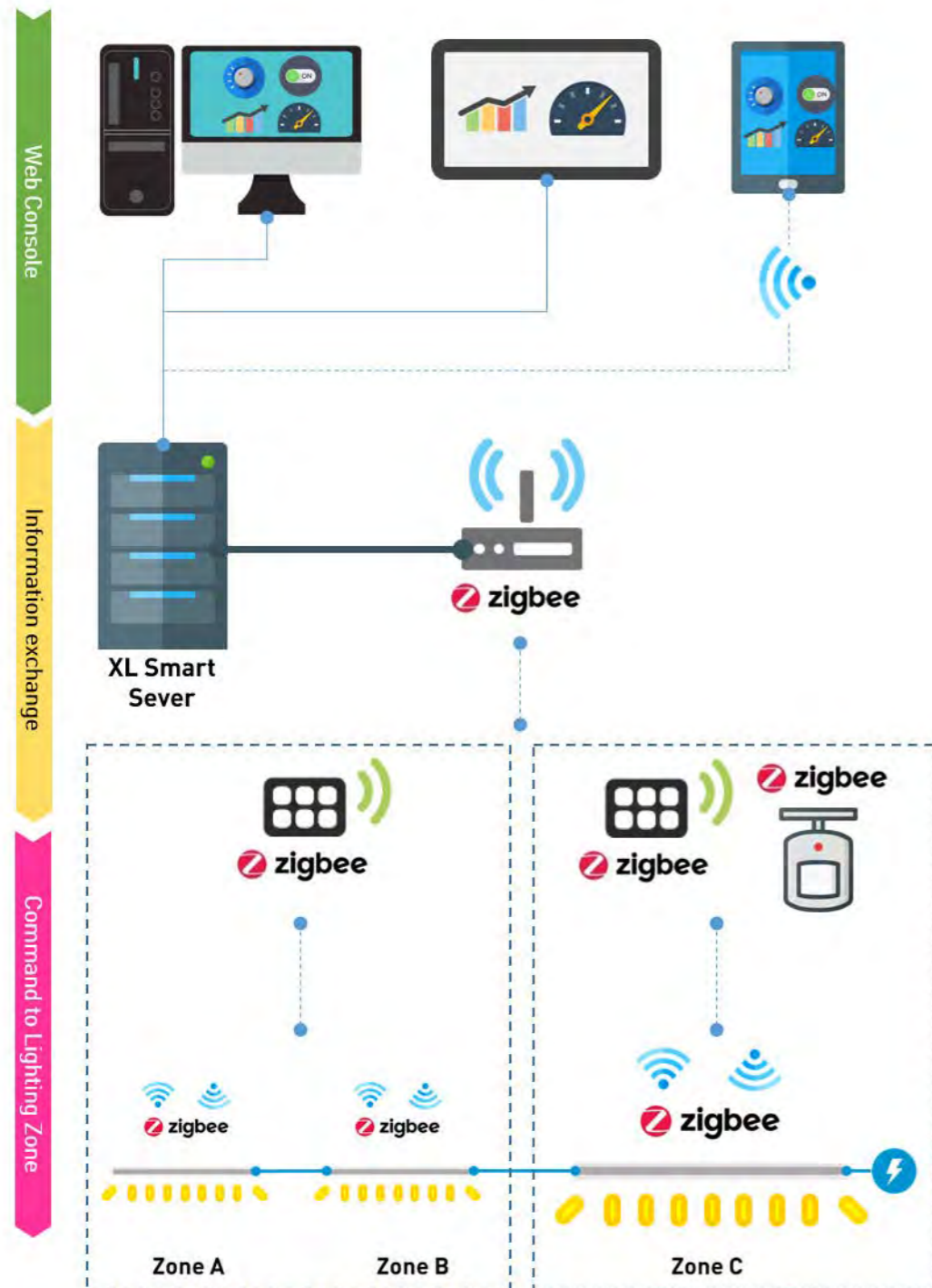
In addition, since our programming, the lighting installation and zone setup become a simple task and not consume much of time. Also, as our well established system, XL Smart can easy connect with other system (such as Crestron and Lutron system) and equipments likes thermometer and humidity meter.

Hence, we do believe that XL Smart is benefit to all because :

- Via our programming, we deploy designers' ideas easily
- Shorten the installation and configuration time, especially after renovation
- Save daily cost, such as energy, administration and FMO operation time
- With comprehensive portal, it provide Hassle free customer experience
- Comply to EMSD regulatory, such as dimming, schedule control and Daylight control

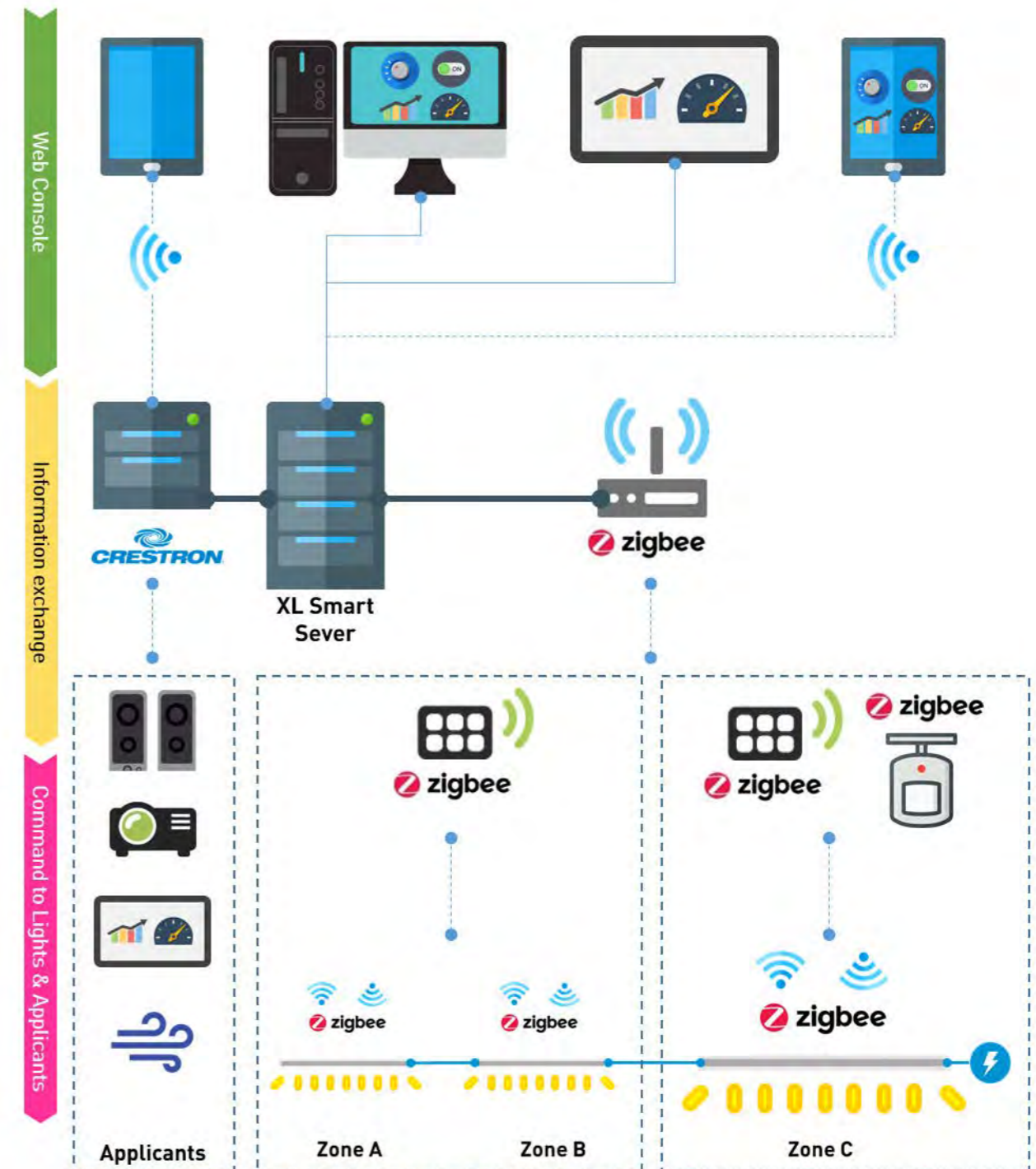
XL Smart Connectivity

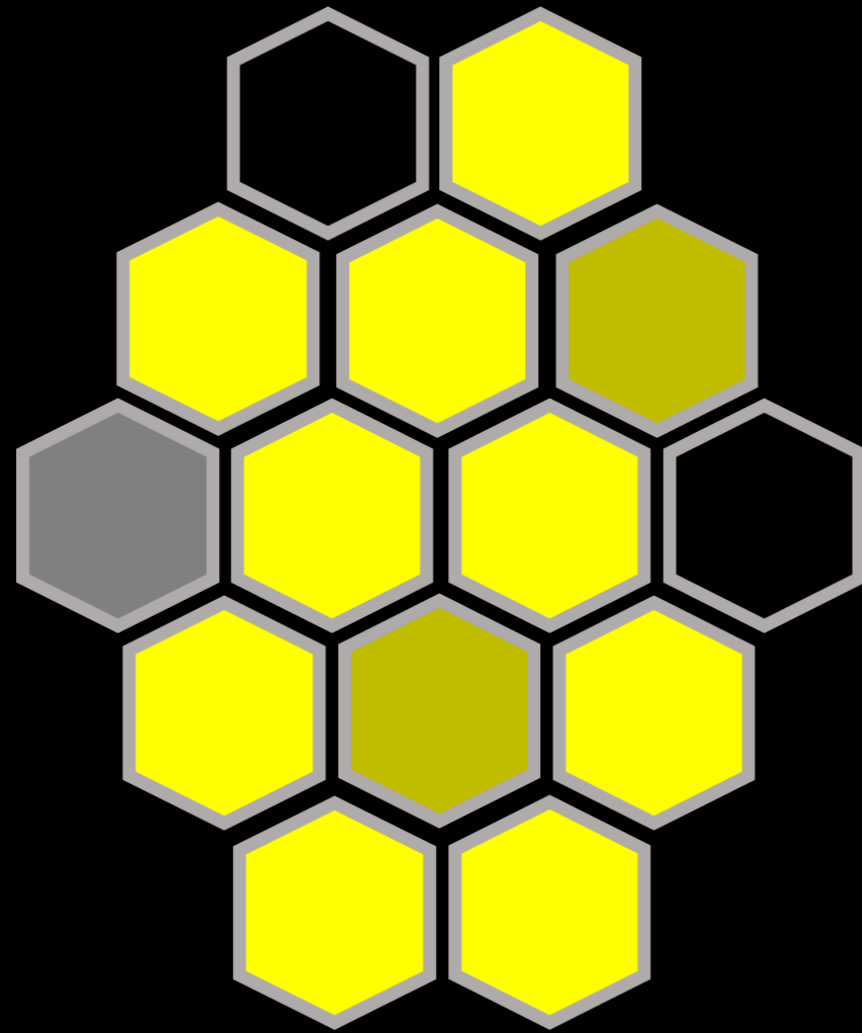
Based on the Zigbee technology, those lights are controlled wirelessly



XL Smart plus control system

Via web API, XL Smart can connected with other controlling system, such as Crestron and Lutron





XL Smart Lighting Zone

XL Smart Lighting Zone

Base on Zigbee wireless technology, each light can be controlled individually or grouped as a ZONE

During zone configuration, each light is based on XL Smart programming to make instead of complicate wiring

After setup from XTREME, all zones can be controlled individually with features

- Switch On and Off
- Dimming (up to 9 steps brightness levels)
- Color Temperature

Benefit from XL Smart Lighting Zone are

- Simple wiring
- Easy configuration
- Shorten installation time
- More lighting idea can be deployed

Also, once you have any idea about lighting zone setup

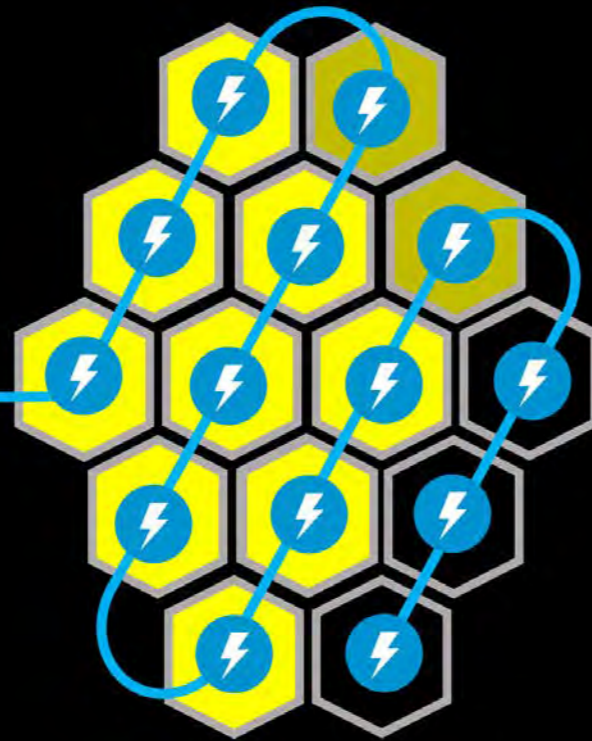
- Just call us
- State your requirement
- We make it

*Each XL Smart features are also subject to LED lights and drivers used

Single wiring
to the whole



220V from MCB



Simple Installation

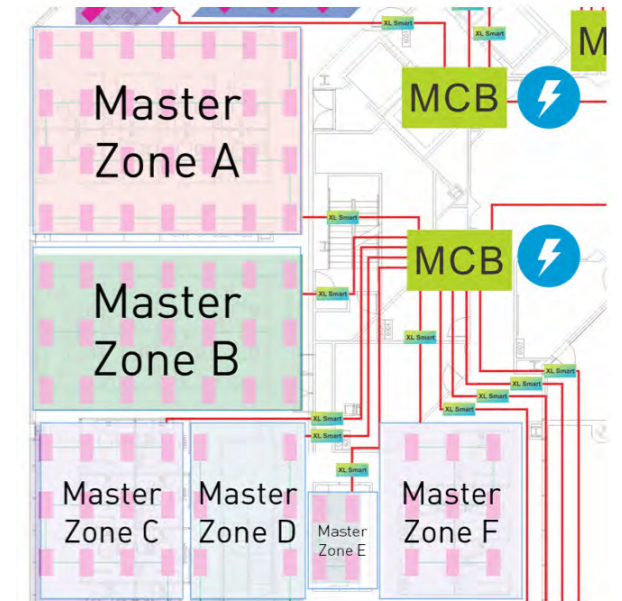
Installation

Since the XL Smart lighting zone and programming, the power supply wiring can be much simple.

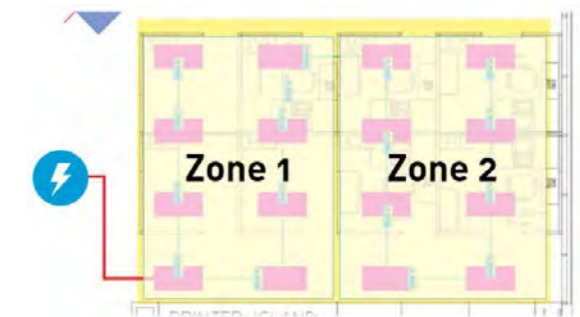
For example, a single power line from MCB is sufficient enough for the whole master zone's consumption.

Benefit to costing

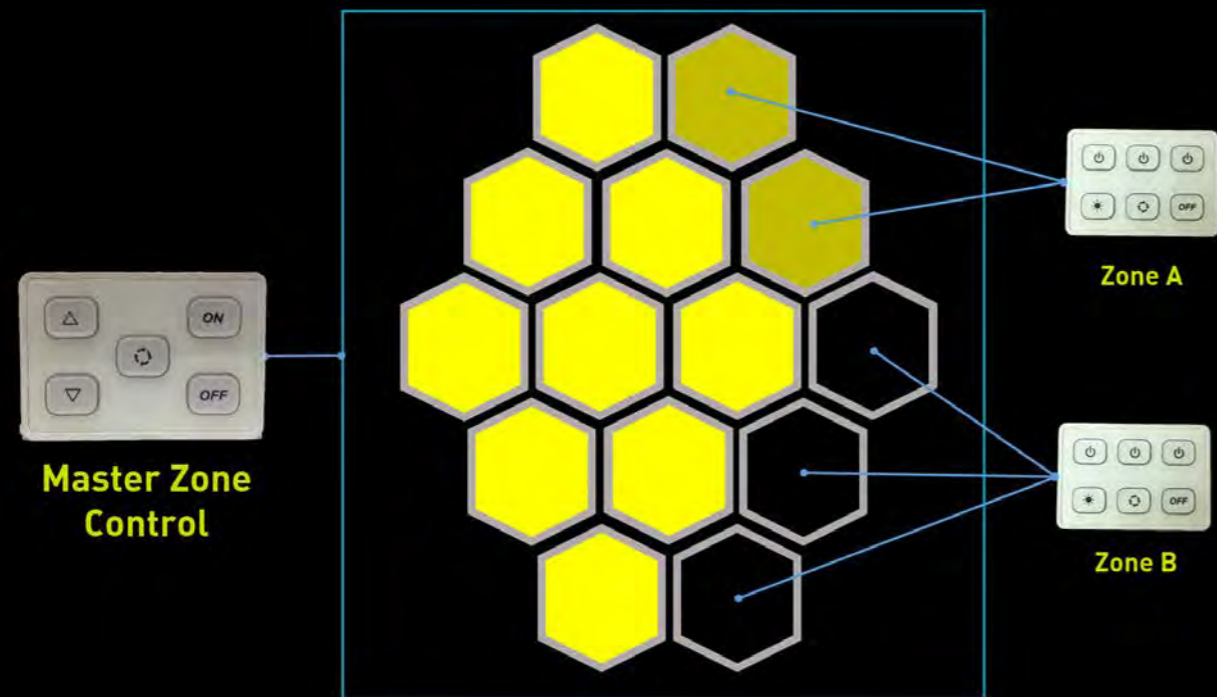
- Simple installation instruction
- Shorten time
- Power is well utilized in right place for right people at right time
- Easy configuration for any seating Move-and-Change
- Setup anytime instead of only non-business hours (e.g. overnight or holiday)



In addition, after power wiring installation completed, the master zone can be split to slave zones which are controlled with different XL Smart Switch.



*Each XL Smart features are also subject to LED lights and drivers used



XL Smart Switch

XL Smart Switch

It is a simple iconic interface for the end user to control assigned lighting zone wirelessly.

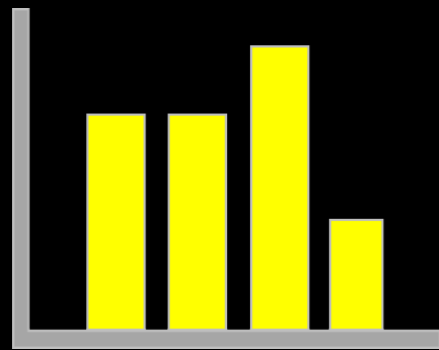
Subject to the lights used and XL Smart program configuration, it can achieve on/off, dimming, scenes or color temperature control.

Benefit from XL Smart Switch are

- The lighting switch location can be flexible
- Provide Hassle free user experience
- Control the light with each user's demand individually
- Less follow up to office administrators and FMO officers



XL Smart Extra Features



Extra Features

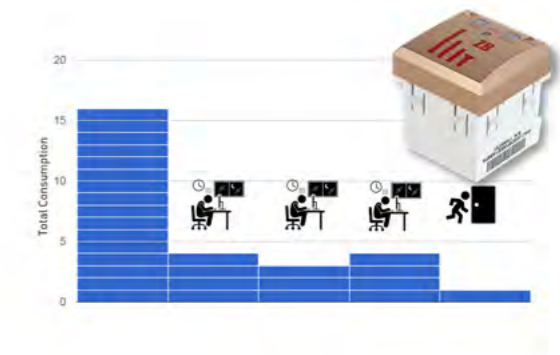
Schedule Control

XL Smart also have wireless gateway for schedule control by specific date, daily and weekly. Thus, the control of the lighting zone are based on your requirements to setup and execute it automatically.



Power monitoring

With Power Consumption reader module, XL Smart can also record the power consumption in each power node. It is connected with power supply for the real time power consumption reading. Hence, a dashboard can be made and some usage pattern will be discovered. For example, you can find the most occupied zone in specific date and time.



Action triggering from sensors

XL Smart also have Motion and Light sensors respectively. With sensors, the lighting can be controlled by different conditions. For example, the light for office corridor will be switched on once someone walk through in there.



*Each XL Smart features are also subject to LED lights and drivers used

XL Smart Web Portal

As professional smart lighting solution, we can base on the layout plan to provide a tailor made Web Portal for

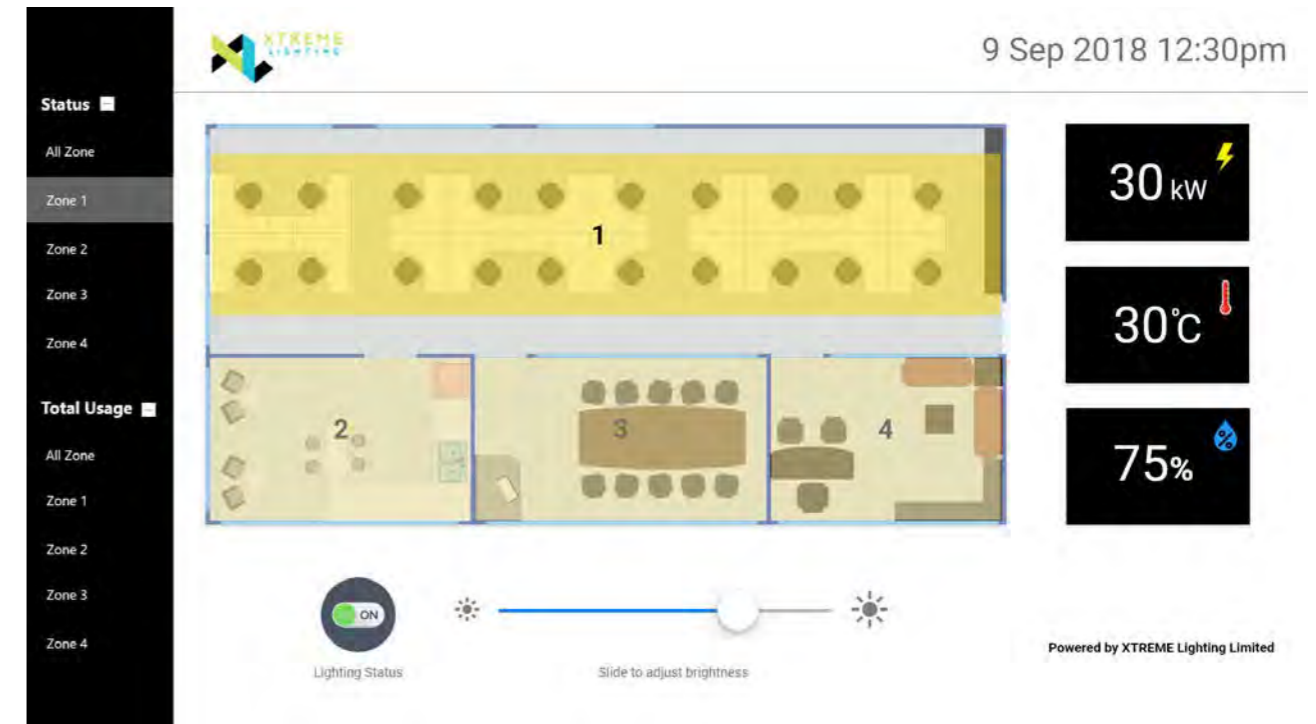
- Lighting Status Check
- Lighting Control
- Usage Reading

Since XL Smart connectivity, the reading from thermometer and humidity meter also be displayed in there

Hence, the FMO can know the environmental status in a tablet instead of human measurement in different places

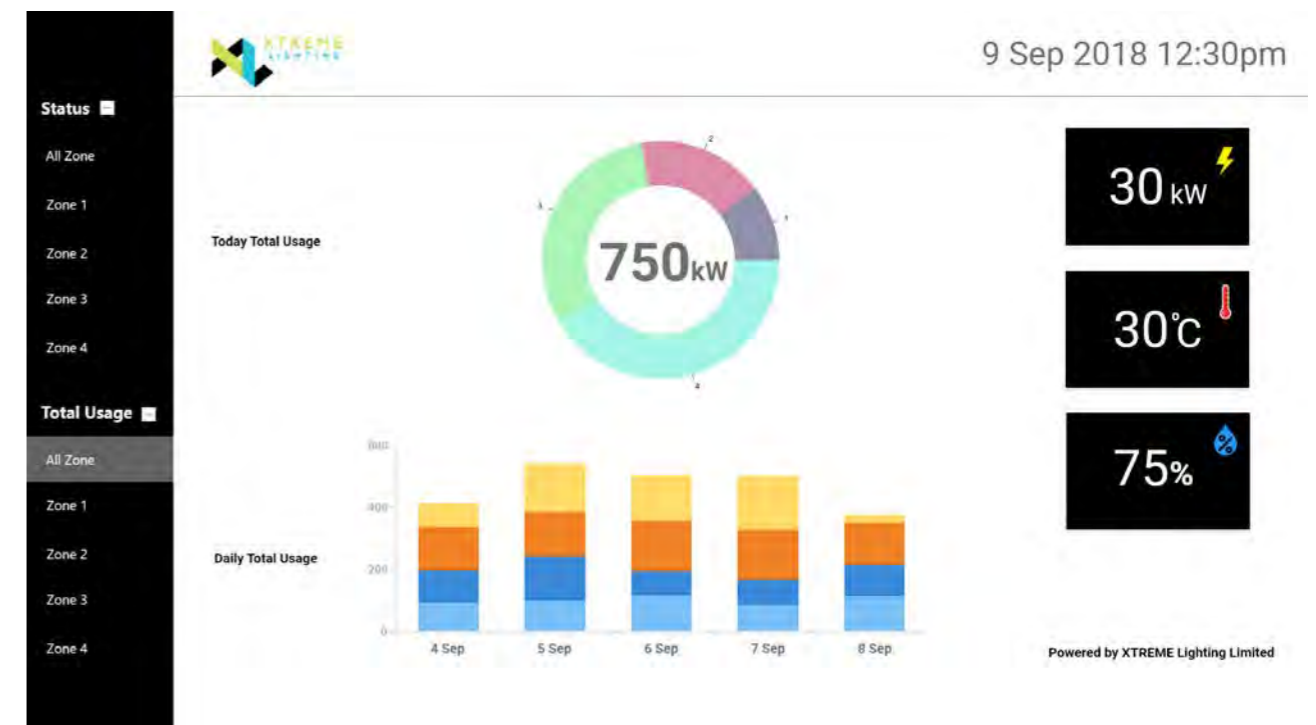
Lighting Control

Each Lighting Zone status is shown in there with "On/Off" and "Dimming features



Dashboard

Each Lighting Zone instant usage and history are shown with comparison view

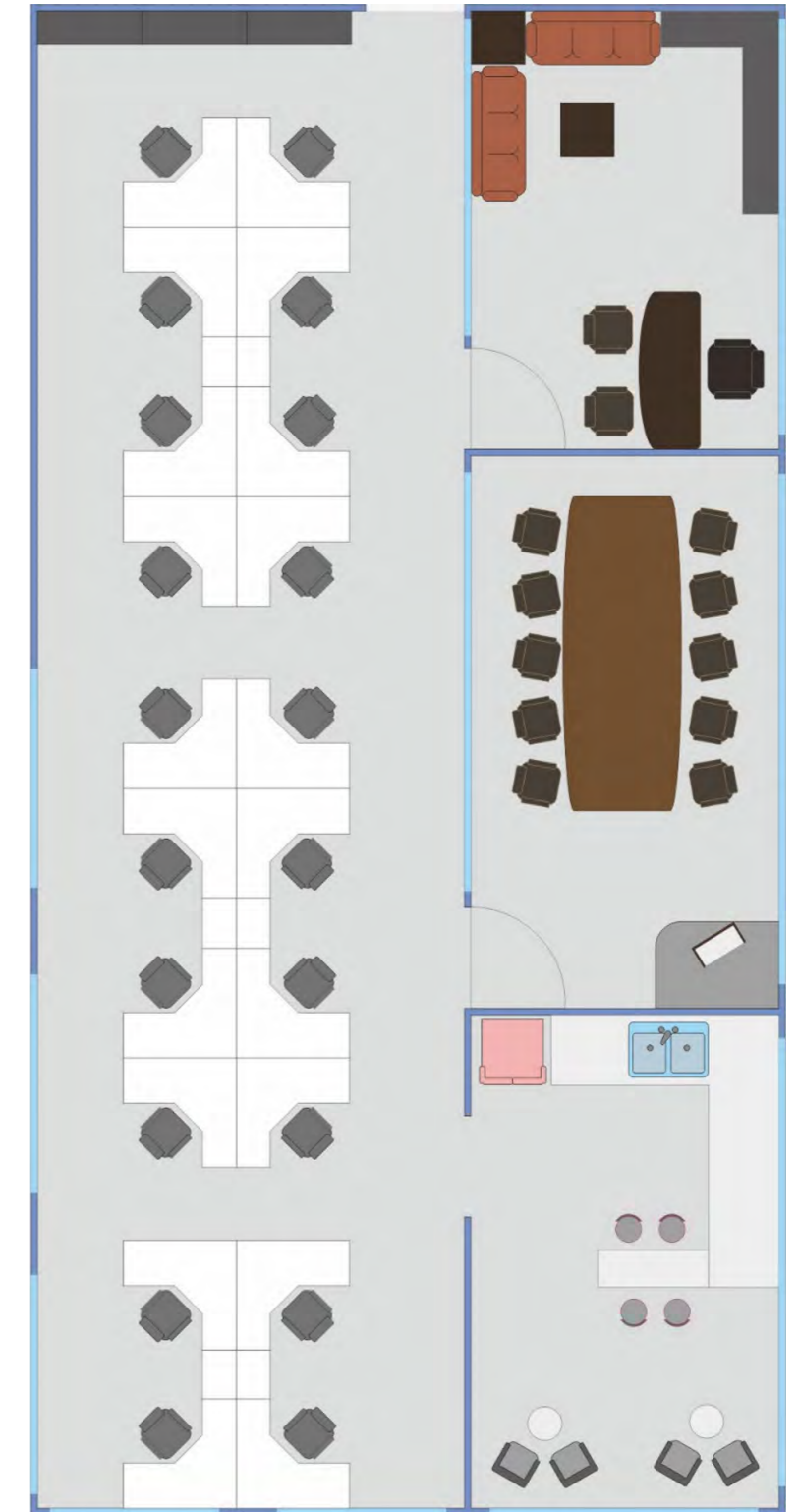


*Each XL Smart features are also subject to LED lights and devices used

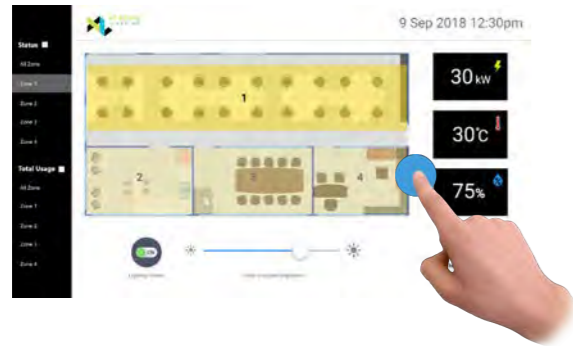
XL Smart in your office

In your office

- 1 Manger office
- 20 open partition seats
- 1 conference room
- 1 pantry
- The working hour is from 9:00am to 6:00pm



In your office, there have



Control Portal

- The whole lighting is controlled by a finger tip only
- Another devices' controller can be connected in there, such as air condition control



XL Smart Programming

- The whole lighting "On" and "Off" can be controlled by program scheduling.
- For example, lights will be "Auto-On" from 8:30am to 7:00pm at each working day



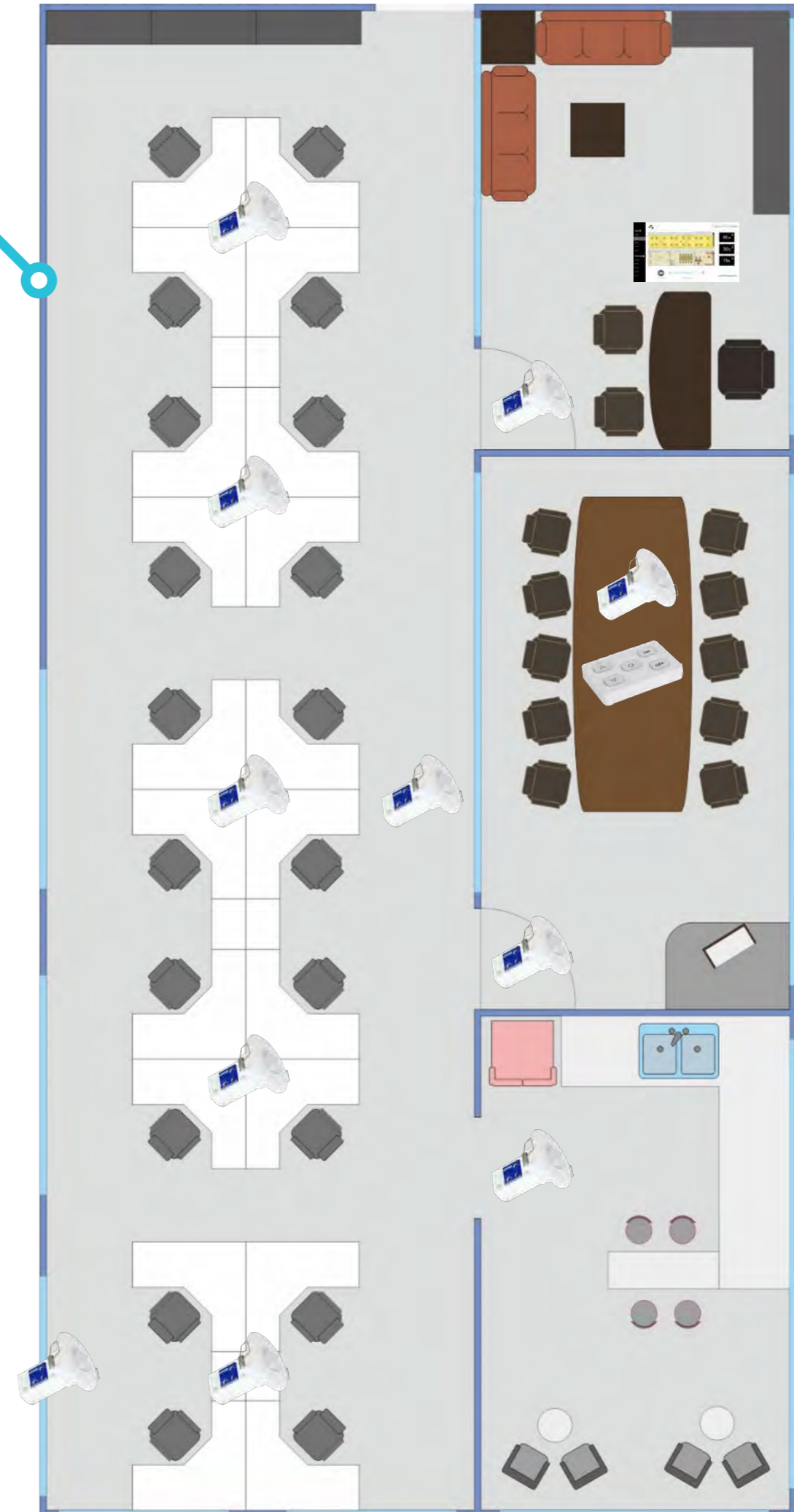
XL Smart Sensors

- Motion sensors are placed at the ceiling for human motion detection. Once motion is detected in non office hour, the lights in such zone will be switched "On" for specific period
- Daylight sensor is placed nearby the window. Base on the daylight, the lights in there will be dimmed or switched off automatically



XL Smart Switch

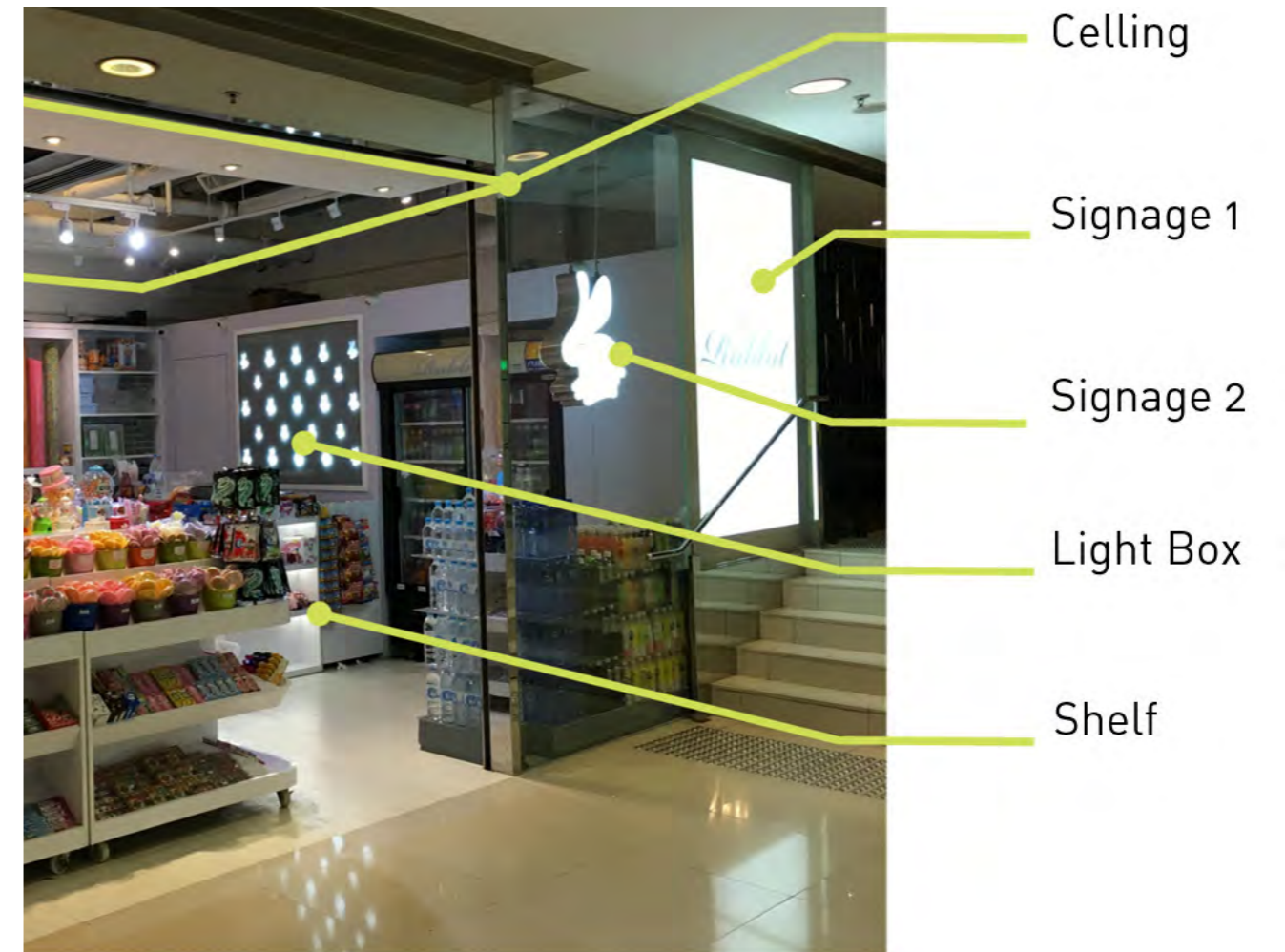
- It is treated as 2nd controller, such as scene selection in conference room
- Daylight sensor is placed nearby the window. Base on the daylight, the lights in there will be dimmed or switched off automatically



XL Smart in your shop

In your shop

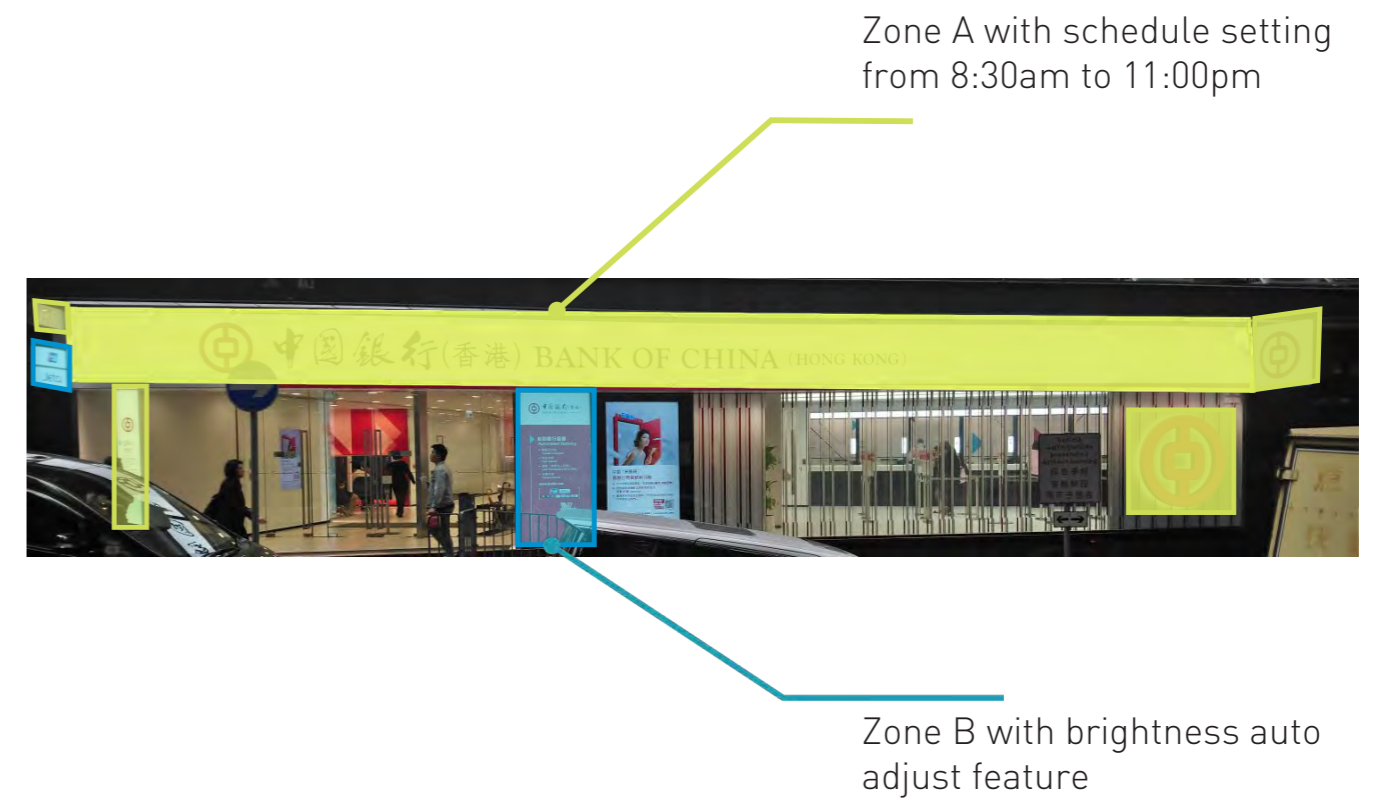
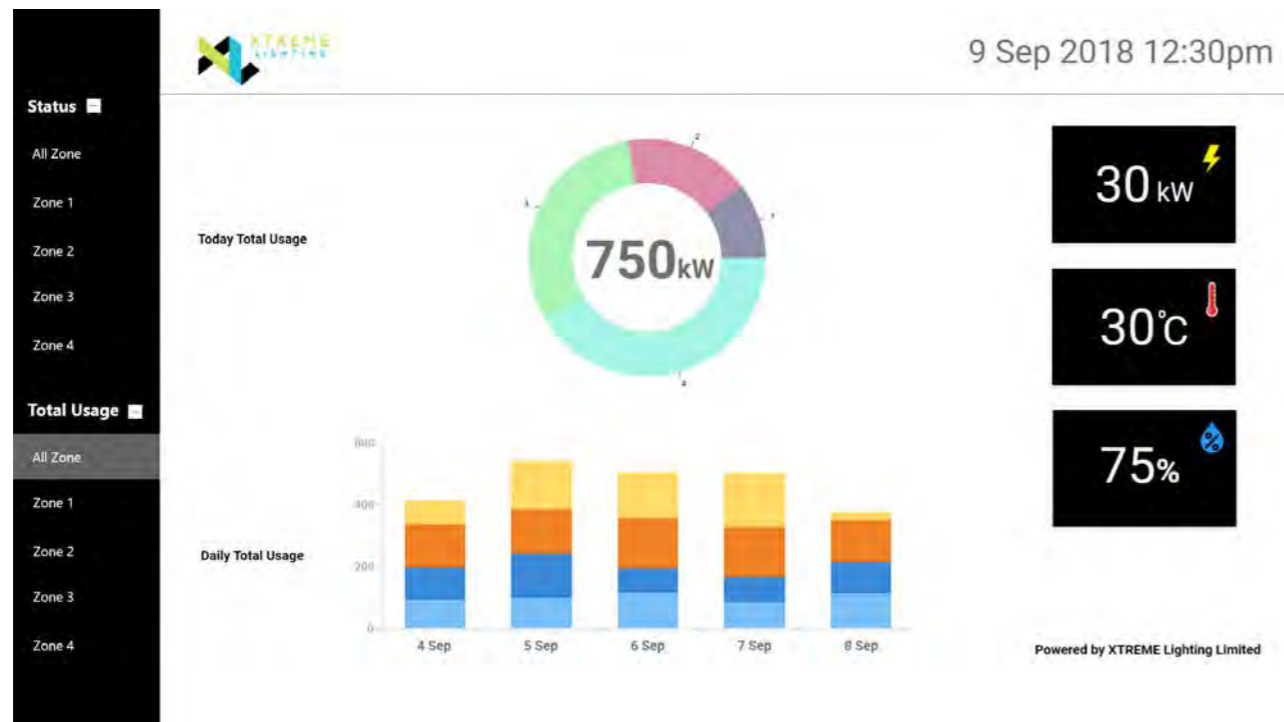
- 5 Lighting Zone can be setup with schedule on and off
- Staff simply adjust the brightness via XL Smart Switch



In your shop

- Based on XL Smart Web Portal, Operation manager in head office can know the lighting, power consumption and environment status anytime

- For **outdoor signage**, 2 Lighting Zone can be setup with schedule on and off
- The brightness of the signage will be auto adjusted via XL Smart Day light sensor
- Based on XL Smart meter and online dashboard, Operation manager in head office can know the power consumption anytime. In addition, the usage figure can be generated for further reporting, such as Environmental Performance Reporting



XL Smart Components



XL Smart Switch

It is an iconic interface for the end user to control assigned lighting zone. Subject to the lights used and XL Smart program configuration, it can achieve on/off, dimming, scenes or color temperature control.

A5 Switch

- 5 buttons on switch
- ON/OFF, DIM
- It can be configured as Master Switch for multiple lighting zone / switch



T6 Switch

- 6 buttons on switch
- ON/OFF, DIM, COLOR TEMP
- It can be configured as child Switch for 1 lighting zone



B6 Switch

- 6 buttons on switch
- ON/OFF, DIM, COLOR TEMP
- It can be configured as child Switch for 2 lighting zones



A6 Switch

- 6 buttons on switch
- ON/OFF, DIM, COLOR TEMP
- It can be configured as child Switch for 3 lighting zones



U6 Switch

- 6 buttons on switch
- ON/OFF for 3 lighting zones
- It can be configured as child Switch for 3 lighting zones



*Each XL Smart features are also subject to LED lights and drivers used

XL Smart Light Controller

It is a core component between power and the lights for "On", "Off" and "Dimming". Subject to the lights used, it can also achieve color temperature or brightness control with the characteristic of simple operation, flexible control and convenient installation

Control Box

- Supports LED driver with 0-10V dimming signal
- Supports AC cut off for non dimming light (MAX 4.6A/1000W)
- It can be configured as member in lighting zone



XL Smart LED Driver

- Supports LED lighting with 30W ~ 36W power requirement
- Support dimming by constant current method
- It can be configured as member in lighting zone

Gateway

- It is an IoT gateway with 9 x 11cm small size, equipped with 802.11n WiFi connection and Zigbee connection.
- Compliance with Zigbee Home Automation can control Zigbee inside devices. Hence, schedule "On", "Off" and "Dim" can be supported
- Powered with mesh network functions could enhance the stability of network.
- Support schedule ON/OFF and brightness setting by programming in Apps
- Support advanced programming for Motion Sensor and Lux Sensor by programming in Apps
- Support power reading from Power Consumption Reader

*Each XL Smart features are also subject to LED lights and drivers used

XL Smart Sensor

Motion Sensor

- It is a Motion (PIR) sensor with 6 x 7.1cm small size, equipped with Zigbee module.
- Two stages of delay off time adjustable by our program (each stage up to 2 hours)
- Standby brightness adjustable by our program (0%, 10%, 20%, 30%)
- Supports LED lighting with dimming
- Multiple Motion Sensor supported in 1 lighting zone



Light Sensor

- It is a light sensor with 6 x 7.1cm small size, equipped with Zigbee module.
- Energy saving adjustable
- Smart lux sensing algorithm
- Supports LED lighting with dimming
- Multiple Motion Sensor supported in 1 lighting zone

XL Smart Reader

Power Consumption Reader

- It is connected with AC power supply for the real time power consumption reading
- Via Zigbee module inside the reader and the Gateway, the power consumption reading will be passed to server for recording
- The record will be shown in chart view in XL Smart Web modules



*Each XL Smart features are also subject to LED lights and drivers used

XTREME Lighting like to
work with you,
discuss with you and
share with you because

We're your lighting partner

by Daniel Li
Founder of XTREME Lighting Limited



2018 XTREME Lighting Limited - all rights reserved

XTREME Lighting reserves the right to alter material, dimensions, weight and characteristics without prior notice. All the surface, color and specification of the products which are mentioned in the catalogue, please refer to physical product by XTREME Lighting.

For latest information and specification, please contact XTREME Lighting at inquiry@xlighting.com.hk or +852-3565 5045.

This catalogue replaces all previous catalogues.

